



## 2019 Horizon

### 94' E88 - Ti Amo

"Ti Amo" is a late-model, mint condition example of the popular E88 model from Horizon. This model is lauded for the optimized hull design with a four-stateroom, six-head layout, hydraulic beach club, and skylounge design.

- Power - Used - Motor Yachts
- Diesel Fuel
- Fiberglass Hull
- FORT MYERS Florida United States

Vessel ID# 2786653

\$5,990,000 USD  
 €5,341,366 Euros \$7,587,832 CAD

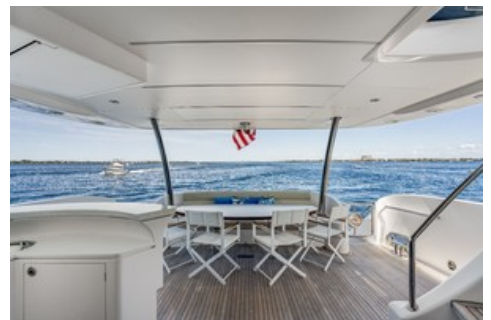
## Data Sheet

Category: Motor Yachts  
Type: Power - Used  
Year: 2019  
Beam: 21' 0"  
LOA: 94' " (28.65 meters)  
Draft Max: 5' 8"  
Cabins: 4  
Heads: 6

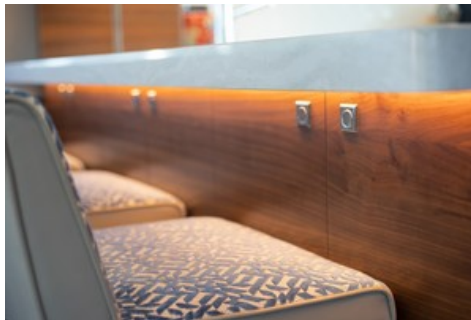
Fuel Type: Diesel  
Hull Material: Fiberglass

Displacement: 199740 lbs  
Fuel Tank: 2700 Gallons (10220.61 Liters)  
Fresh Water: 500 Gallons (1892.71 Liters)  
HIN/IMO: HY1889211819

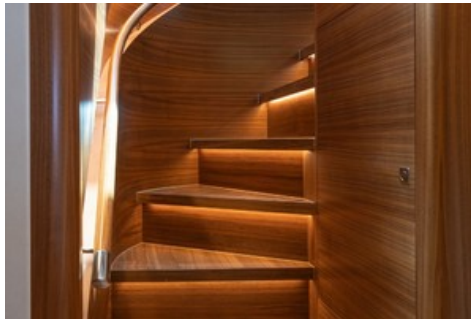
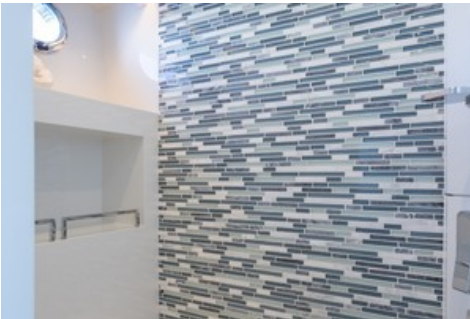
## Featured Images

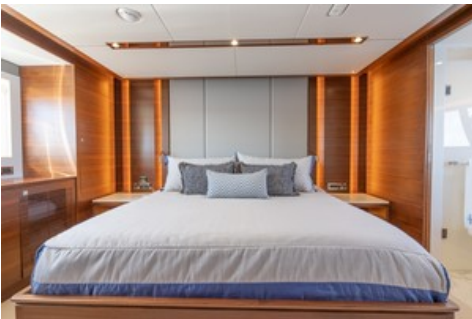






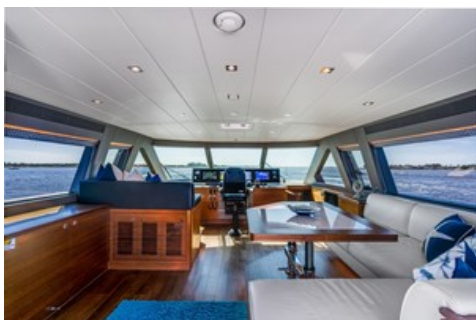
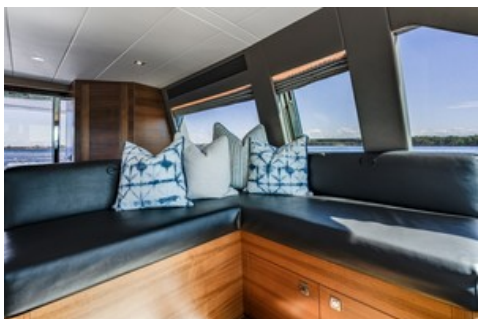




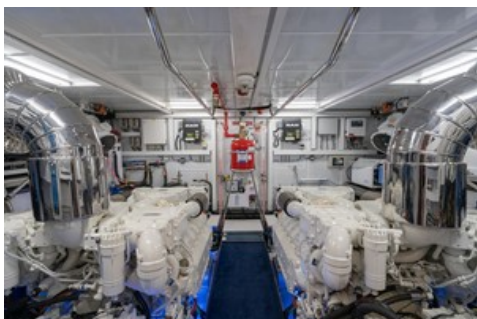














## Engines

---

### Engine 1

- Engine Make: MAN
- Engine Model: V12
- Power HP: 1800.00
- Power KW: 0.00
- Fuel Type: Diesel
- Engine Hours: 200.00

### Engine 2

- Engine Make: MAN
- Engine Model: V12
- Power HP: 1800.00
- Power KW: 0.00
- Fuel Type: Diesel
- Engine Hours: 200.00

## Full Details

---

### Vessel Walkthrough:

#### Forward / Aft Decks

- Non-skid fwd deck
- (2) High tensile ½", 250ft anchor chains
- (2) Anchor chain counters
- (2) S/S 80kg anchors
- (2) Maxwell 4000 series windlass
- Freshwater anchor chain washdown
- Heavy-duty S/S 2" handrail w/ 1-1/4" stanchions
- (4) FRP bulwark side boarding doors
- Frameless windows, tinted Low-E tempered glass
- U-shaped fwd dinette w/ sunpads
- Sun awning for the forward seating
- Fwd deck storage lockers for fenders & lines
- Teak aft deck, swim platform & teak steps
- S/S sliding door for main salon, self-locking
- (2) Aft deck corner fairleads
- Aft deck two level bar w/ sink & combo fridge/icemaker
- Aft deck electric folding TV cabinet w/ 32" Samsung LED TV
- Fusion Marine stereo system
- Hydraulic Hi/Lo swim platform (1500 lb load capacity)
- Hydraulic full-width stern door & beach club area

#### Skylounge / Boat Deck

- Skylounge design w/ dinette, Hi/Lo table, dayhead, desk, fridge & STIDD helm chair
- Skylounge door design w/ manual sliding door & electric Hi/Lo window
- Custom designed helm w/ full set of engine gauges, monitoring system for important equipment, fuel & water gauges, Ritchie Supersport magnetic compass, bilge pump panel & navigational lights
- Sun awning for boat deck
- 40" Samsung LCD TV w/ Bose Soundtouch 130 home theater system
- Samsung Blu-ray player + Apple TV
- Non-skid boat deck
- Removable S/S rails around boat deck
- Oversize drains w/ strainer on each corner w/ internal overboard drains
- FRP cabinet w/ sink, fridge & icemaker
- Hi/Lo 24" Aritex propane BBQ in FRP cabinet
- Radar arch w/ antenna bracket
- Hatch on hardtop (X1)
- (2) Tokai Sanshin search lights
- Buell air horns on top of radar arch

- Prewire for hydraulic Steelhead davit SM2500
- Fusion Marine stereo system

### **Engine / Propulsion Details**

- Twin MAN V12 D2863LE436 1800HP engines
- S/S shafts Aqualoy 22HS
- High Performance S class 6 Blade propellers
- Main & intermediate bronze struts w/ backing plates
- Shaft & rudder packing glands w/ Tides Marine seals
- ABT Zero Speed Stabilizer (370/16X)
- Hydraulic ABT bow & stern thrusters, 45HP each
- Complete Delta-T engine room ventilation system
- Back-up system & remote hand held control for engine controls
- Spare rudder seals on the rudder shaft
- S/S emergency tiller in rudder cabin
- Underwater exhaust system for engines w/ bypass mufflers
- Engine mounts on S/S engine bed bonded to FRP hull girder
- Fire insulation & insulated ER door
- Engine alarm system for low oil pressure & high water temp
- Air compressor

### **Mechanical Systems**

- Chilled water Marine Air air conditioning, (3) units 5T each
- Backup A/C circulation pump
- 2,700 gallon aluminum fuel tanks w/ sight & electrical gauges
- Dual Racor 75/1000 MA fuel filters/water separator, each engine
- (2) Electric fuel transfer pumps
- Reverso FPS210 fuel polishing system
- Oil change pump system for engines, gears, & generators
- FRP Water tank with capacity specified in principal dimensions
- Sea Recovery AQM water maker, 900 gal/day
- High-volume AC fresh water pressure pump & back up DC pump
- Fresh water charcoal filters in main supply pipe & galley
- Marine grade lines for fresh water system
- (2) 30 gallon water heaters
- Hot water circulation pump
- Headhunter sanitary waste treatment system
- Tecma toilet system
- 200 gallon holding tank w/ macerator pump
- 100 gallon sump tank
- "Y" valve for holding tank with deck fitting for dockside pump out
- Five electric RULE bilge pumps
- (2) Manual bilge pumps in ER & forward staterooms
- Bilge exhaust ventilation fans
- Seafire fixed fire extinguisher (FM200) for ER w/ remote control
- Auto shutdown system
- Automatic fire damper system
- (4) Portable fire extinguishers in recessed lockers

### **Electrical Systems**

- LED lighting system throughout interior & exterior
- Maretron monitoring & control system
- (2) Onan 29kW generators w/ sound shields
- 100A shore power system w/ (2) 100A Glendinning cable masters & (2) 100A ISO boost transformers & (2) shore power plugs on fwd deck
- (2) House battery inverter/chargers
- Vapor proof battery switch
- (4) Engine start batteries 255Ah Lifeline AGM
- (8) 210Ah Lifeline AGM batteries for boat's DC 24V service power
- (2) 210Ah Lifeline emergency batteries w/ dedicated Charles charger



- Generator gauge w/ (2) start & stop buttons on FB
- GFI protection for all AC outlets in heads, galley & ER
- Electrolysis bonding system
- Cathodic protection w/ zinc anodes for shafts, struts, etc.
- (8) Underwater lights
- (2) Stern docking lights

### **Interior Decor / Equipment**

- Guest accommodations include master stateroom, VIP cabin & port and stbd twin cabins, all en suite
- Crew area has 2 staterooms, full head, crew galley & dinette, w/ access from salon & transom
- Walnut semi-gloss wood on main deck & guest staterooms w/ teak accents
- Oak wood for crew area
- GE stacked washer/dryer in guest companionway + crew
- Custom luxury interior package for décor & lighting

### **Salon**

- Custom stone floor at salon entrance
- Leather L-shaped sofa + coffee table
- New breakfast bar design w/ barstools
- Electric blinds
- Wine cooler, icemaker
- Aft dayhead
- Custom Hi/Lo glass screen separating salon & galley
- 55" Samsung LCD TV
- Samsung Blu-ray player + Apple TV
- Bose Lifestyle 650 home entertainment system

### **Galley**

- New island design w/storage
- Stone countertops & country kitchen tabletop
- Large u-shaped country kitchen dinette
- Sub-Zero full height refrigerator w/ freezer drawer
- Sub-Zero fridge & freezer drawers per GA
- GE microwave, oven, cooktop, dishwasher, trash compactor & disposal
- S/S pot & pan holders over cooktop in galley
- Full set of tableware + cookware for 10 guests
- Built-in holders for glasses, plates & dishes
- Electric blinds for windshield in country kitchen
- 32" Samsung LCD TV
- Fusion Marine stereo system

### **Master Stateroom**

- King bed
- Walk in closet + 2 add'l hanging closets
- En suite head w/ water closet, dual sinks & shower
- Extensive storage areas
- 50" Samsung LCD TV
- Bose Soundtouch 130 home theatre system
- Samsung Blu-ray player + Apple TV

### **VIP Stateroom**

- Queen bed
- Dual hanging lockers
- En suite head w/ toilet, sink & shower
- 40" Samsung LCD TV
- Fusion Marine stereo system
- Bose Soundtouch 130 home theater system
- Samsung Blu-ray player + Apple TV

**Twin Guest Staterooms (2)**

- Twin sliding beds in each room
- Hanging locker
- En suite head w/ toilet, sink & shower
- 32" Samsung LCD TV
- Fusion Marine stereo system

**Crew Quarters**

- Captain's cabin w/ hanging locker + 32" Samsung TV
- Bunk beds w/ hanging locker + 32" Samsung TV
- Head w/ toilet, sink & shower
- Crew mess w/seating
- GE fridge with freezer
- GE microwave
- GE stacked washer/dryer
- 32" Samsung LCD TV in beach club
- Fusion Marine stereo system

**Electronics**

- (5) Panasonic PBX Telephones w/ intercom feature in salon, pilothouse, master, VIP & crew mess
- Exterior connector for shore phone & TV
- KVH Tracvision HD7 satellite TV antenna & dummy dome
- WiFi booster system w/ wireless routers

**Pilothouse Navigation**

- Garmin 8000 navigational system
- (4) 17" multifunction displays
- (2) Garmin GPS 19x NMEA 2000
- Garmin GMR 1226 xHD2 radar scanner open array radar
- GARMIN GXM53 weather receiver
- (3) Garmin VHF's
- Garmin GMI 20 Marine instrument + AIRMAR transducer (depth, speed, temp)
- Garmin fish finder
- Garmin Autopilot control unit
- Garmin rudder feedbackGarmin AIS 600
- Black box bridge
- Garmin Wi-Fi adapter kit
- Ritchie supersport compass

## Event Information

---





March 24 - 27, 2022  
101 S Flagler Dr, West Palm Beach, FL 33401



## 2022 Palm Beach International Boat Show

101 S Flagler Drive  
West Palm Beach FL 33401 USA  
Start Date: 03/24/2022  
End Date: 03/27/2022

The 36th annual Palm Beach International Boat Show, March 24th-27th will be located along the waterfront and Flagler Drive in Downtown West Palm Beach, FL. The show will feature more than \$1.2 billion worth of yachts and accessories, including hundreds of boats ranging from 8-foot inflatables to super yachts nearly 200 feet in length.

Get outside and enjoy live music and refreshments at the show's famous floating cocktail lounges. Guests are also invited to come by boat and may tie up to free docks located south of the in-water displays.

Elevate your experience in Palm Beach and become a VIP. The Windward VIP Experience is an indoor and outdoor oasis that includes early admission to the show, a premium open bar, hors d'oeuvres, concierge service and much more.

[Event Details](#)

## CONTACT BROKER



### 26 North Yachts

2525 Marina Bay Drive West  
Suite 203A  
Fort Lauderdale FL 33312 USA  
Phone: 1-954-900-9988  
Fax: 1-954-206-3075  
<https://www.26northyachts.com>



### Nicholas Scherb

#### Yacht Sales

2525 Marina Bay Drive West  
Fort Lauderdale FL 33312 USA  
Office: 1-954-900-9988  
Cell: 1-561-568-2600  
Email: [nicholas@26northyachts.com](mailto:nicholas@26northyachts.com)



© 2022 International Yacht Brokers Association - Nicholas Scherb, Active Member - Vessel ID: 2786653